

2006 Monaco Camelot 42-DSQ

Contents

General Description:.....	3
Options:.....	3
Dimensions	5
Tank Capacities.....	5
Weights & Dimensions.....	6
Wheels, Tires & Axles.....	7
Steer Axle	7
Tires	7
Front Bearing Conversion - Apr 24, 2023.....	8
Drive Axle / Differential.....	8
Brake – Air Spring Chamber.....	8
Tag Axle	9
Park Brake Switch	9
Wiring Configuration (Typical):	9
Tire Pressure Monitoring System:	9
Diesel Fuel Additives:	9
Leveling System	9
Jack Pads.....	9
Front Slide (Road Side)	10
Belts.....	10
Air Filter (Engine).....	10
Air Intake Heater	11
Fuel Filters	11
Engine: Cummins ISL 400 8.9 L.....	11
Engine Oil:	11
Engine Cooling System:	11
Coolant Tank Replacement.....	12
Boost Pressure (Normal as per Cummins).....	12
Engine Data Plate (as per Cummins QuickServe Data for S/N 46580780)	12
Wrist Pin Recall (as per Cummins QuickServe Data for S/N 46580780).....	12
Upgrade May 2019: Source Engineering Wax Valve.....	13
Wax Valve Adjustment	13
Exhaust System	13
Turbocharger Stud Replacement - Engine: Cummins ISL 400 8.9 L S/N: 46580780	13
Engine Starter:	14
Engine Data Link – J1708.....	14
Engine & Transmission Monitoring (Real Time).....	15

2006 Monaco Camelot 42-DSQ

Throttle Position Sensor	16
Hydraulic System (steering & cooling fan).....	16
Air Dryer.....	16
Transmission: Allison 3000 MH 6 speed S/N: 6510625589	17
Approved Fluids – TES 295.....	17
Transmission Configuration as Installed	17
Mechanical Ratios (do not include torque converter multiplication.....	18
Batteries.....	19
House:	19
Transfer Switch:	21
Hose Reel (Water System)	21
Marker/Clearance Lights.....	22
Paint Colors.....	22
2006 Monaco Signature Series Model Lineup	23
Generator.....	24
HydroHot Heater	24
Wet Bay Heater.....	26
Air Conditioners.....	26
Headlights	26
Windshield Wipers.....	26
Blades.....	26
Windshield Wiper Motor	26
Air Bags (10 Required).....	27
Suspension Parts (Possible Alternates: from 2006 Executive RR10S chassis).....	28
Slide Motor.....	29
Upholstery.....	29
Steps – Front Door	29
Over the Door Awning	29
Florescent Fixtures.....	29
LED strip conversion:	30
Microwave Oven.....	30
Refrigerator	30
Washer/Dryer	30
Built-in Vacuum	31
Toilet (1/2 Bath).....	31
Water Filter.....	31
Planned Work / Potential Parts Sources.....	31
Fuel Level Upgrade.....	31
FASS Fuel Pump Installation: FASS Titanium TS-D08-165G.....	31

2006 Monaco Camelot 42-DSQ

Micro-Air EasyTouch RV Thermostat.....	32
Smart Wheel Controller	32
Build Sheet – From Monaco.....	33

Date Purchased: March 13, 2017
License: **BXG-6135**



VIN: **1RF43561162040521** Coach #: **1666696**
Roadmaster RR10S (Side Radiator) Chassis

General Description:

- 4 Slides.
- Full body paint.
- 10KW Diesel Generator.
- Hydro-Hot 3 zone central heating and cooling.
- 3 Camera rear/side vision system with audio.
- Automatic 3 point leveling system.
- 10 airbags.
- Satellite dish, surround sound system. Corian countertops, leather interior, Convection/microwave, two burner stove, double sinks.
- Bath and a half. Rear bath tub/shower and electric toilet. Day and night shades. Queen bed in the back. Tons of storage inside and out.

Options:

- Solid surface kitchen sink
- Auto generator start
- Power hose reel
- Power electric reel
- RV Sani-Con tank drainage system
- Storage bay slide out tray
- 14 Cu Ft. 2-way stainless steel refrigerator with ice and water dispenser in door
- Microwave/Convection
- Washer/dryer combo
- Bedroom clock radio AM/FM/CD/DVD player in bedroom
- Automatic satellite system
- Central Vacuum
- Sirius satellite radio
- Rear bathtub and shower
- Ceiling fan in bedroom
- 3 Fantastic 12V attic fan with rain sensor and electronic wall thermostats

2006 Monaco Camelot 42-DSQ



Upgrades:

- TNT TPMS System with 12 sensors.
- Silverleaf VMSPc engine/trans monitoring system with HP tablet interface.
- Garmin RV GPS.
- Tile floor living room, kitchen and cockpit
- Full computer desk with cabinets
- Larger TV's in cockpit and bedroom
- Queen bed with Tempurpedic mattress
- Lighting system changed to LED lighting
- Air conditioner Diffusers
- Electric shade and Sunscreens in cockpit
- Spiced Maple cabinetry throughout.

Safety:

- Tyron Safety Bands
- Fire Extinguisher
- Deadbolt lock on entrance door with electronic keypad
- 120V GFI protected circuit
- LP gas detector
- Smoke and carbon monoxide detector
- Bedroom egress window



2006 Monaco Camelot 42-DSQ



Dimensions

	<u>Travel Mode</u>	<u>Slide Extension</u>
Width:	100 ½" (2553 mm)	Max Width (Slides Extended): 161 ½" (4102 mm)
Overall Length:	42' 10" (13,056 mm)	Curb Side Front: 18 ½" (470 mm)
Height:	12' 10" (3912 mm)	Curb Side Rear: 30" (762 mm)
Wheelbase:	270' ¼" (6864 mm)	Road Side Front: 31" (787 mm)
1° Off-Level:	4 ¾" (120 mm) at axle.	Road Side Rear: 18 ¼" (464 mm)

Tank Capacities

Grey:	227 L / 60 gal
Black:	151 L / 40 gal
Fresh:	378 L / 100 gal
Propane:	208 L / 55 gal
Fuel:	492 L / 130 gal

2006 Monaco Camelot 42-DSQ

Weights & Dimensions

	Rated Max		May 07, 2017		
	kg	lbs	kg	lbs	% of Max
Front:	6622	14600	6560	14462 2 @ 7231	99%
Drive:	9072	20000	8165	18001 4 @ 4500	90%
Tag:	4536	10000	2795	6161 2 @ 3081	62%
Tag Set Pressure:			48 psi		
Rear Total:	13608	30000	10960	24163	81%
Total (GVWR):	20230	44600	17520	38625	87%
Cargo Carrying Capacity:	3690	8136			
Spare On-board Capacity:			2710	5975	
GCWR:	24766	54600	24766	54600	
Available Towing Capacity:	4536	10000	7246	15975 Max Hitch 10000	

Monaco and Car Hauler Weight Calculator



Hitch Weight	
kg	lb
280	617

EMPTY

Trailer Axles	
kg	lb
1710	3770

Hitch Wt		Net Change			
		Steer Axle		Drive Axle	
kg	lb	kg	lb	kg	lb
280	617	-133	-293	413	910
300	661	-142	-314	442	975
325	717	-154	-340	479	1056
350	772	-166	-366	516	1138
375	827	-178	-392	553	1219
400	882	-190	-418	590	1300
425	937	-202	-444	627	1381
450	992	-213	-470	663	1463
475	1047	-225	-497	700	1544
500	1102	-237	-523	737	1625
525	1157	-249	-549	774	1706
550	1213	-261	-575	811	1788
575	1268	-273	-601	848	1869
600	1323	-285	-627	885	1950
625	1378	-296	-653	921	2031
650	1433	-308	-680	958	2113
675	1488	-320	-706	995	2194
700	1543	-332	-732	1032	2275



Steer Axle to Drive Axle: 291 inches
 Steer Axle to Hitch: 429 inches
 Drive Axle to Hitch: 138 inches

Trailer Length: 23' 3" from center of trailer ball. Combined rig: 69' 3"

2006 Monaco Camelot 42-DSQ

Front Bearing Conversion - Apr 24, 2023

Converted front bearings from Grease to Oil Bath
Labor: 4 Hours

Manufacturer	Product #	Description
ABC	SET406	Bearing
ABC	SET413	Wheel Bearing
ABC	303-4024	Hub Cap
ABC	35058	Inner Seal Front
FLEE	0205H-1	6 Multi Notch Chrome Cap
ABC	CNB-75W90SY	75W90 Synthetic

Drive Axle / Differential

Rear Axle Ratio: 4.30 to 1

Lubricant: API GL-5 or MT-1 type gear lubricant, 75w-90 Full Synthetic

Volume: 15.1 Liters / 4.0 usgal (approx..)

Brake – Air Spring Chamber

MCM3430332 Type 30 Service Brake / Type 30 Spring Brake

M012606

81913

Short Stroke (2.5")

Clevis / Pin



Curbside spring brake replaced with Haldex LCP3030 Life Seal - July 2024

2006 Monaco Camelot 42-DSQ

Tag Axle

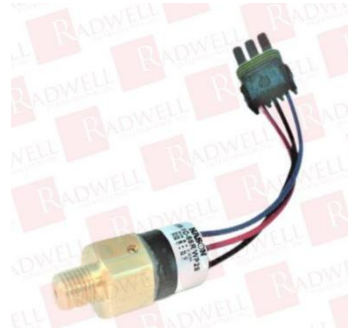
Lubricant: API GL-5 or MT-1 type gear lubricant, 75w-90 Full Synthetic

Park Brake Switch

- Nason SM-1C-66R/WP28
- 3-Wire SPDT Low Pressure Switch
- 66 psi rising setpoint

Wiring Configuration (Typical):

- Black Wire:** Common (Main input)
- Red Wire:** Normally Open (Closes at 66 PSI rise)
- Blue Wire:** Normally Closed (Opens at 66 PSI rise)



Tire Pressure Monitoring System:

TST Truck System Technologies: https://tsttruck.com//shop.html?market_application=24

Model: 507 Series - 10 Flow Thru Sensor TPMS System with Color Display

Batteries: CR1632 (*Before installing, check voltage – Must be > 3 Volts*)

Product Support: <https://tsttruck.com/product-support>

Diesel Fuel Additives:

Diesel Kleen - Endorsed by Cummins - [Technical Bulletin](#)

Opti-Lube XPD - Endorsed by some on Monaco Yahoo Group

Leveling System

<http://www.lci1.com/power-gear%C2%AE-hydraulic-leveling-system>

Touchpad #: 500629 or 140-1226

Control Box #: 500630 or 140-1227

Float switch #: Power gear 140-1146 or Lippert 35908

Jack Pads

RVi GRABPAD Universal Permanent Jack Pads

<https://rvibrake.com/en-ca/products/grabpad-permanent-jack-pad>

Installed Jan 2025



2006 Monaco Camelot 42-DSQ

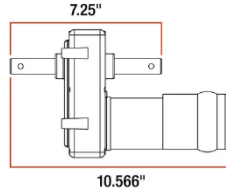
Front Slide (Road Side)

Electric Motor: Klauber RV Slide Out Motor K01285D300 (Lippert 138449)



APPROXIMATE DIMENSIONS

3/4" drive



LIPPERT

FEATURES & BENEFITS



LIPPERT

Slide is a Lippert Flat Floor Model

Belts

A/C Belt: Dayco 15465

Alternator Belt: Dayco 3911581

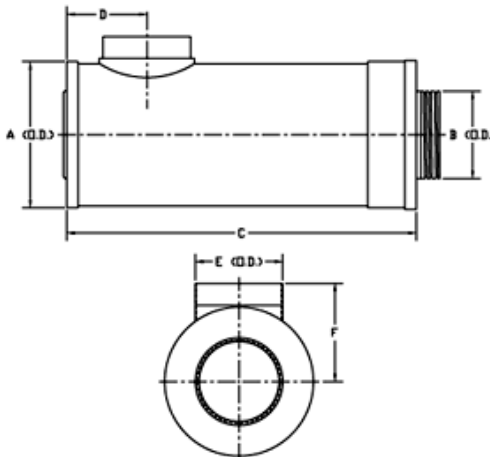
Air Filter (Engine)

Donaldson P537447 (NAPA: NGF 6891 @ C\$ 515.39)

Apr 12, 2023 – Air inlet confirmed as 6-inch

<https://shop.donaldson.com/store/en-ca/product/P537447/19738?requestid=8510882>

Inlet Diameter (B)	6.00 inch (152.4 mm)
Outlet Diameter (E)	6.00 inch (152.4 mm)
Body Diameter Maximum (A)	9.75 inch (247.65 mm)
Body Length (C)	24.00 inch (609.6 mm)
Outlet Location (D)	5.5 inch (140 mm)
Rated Flow HR	1000 cfm (28.32 m3/min)
Restriction HR	5.00 inch H2O (127 mm H2O)
NMFC Code	069100-05
HTS Code	8421310000
UPC Code	742330080849
OEM Part #	546891



There are 22 replacement air filters for DONALDSON P537447. The cross references are for general reference only, please check for correct specifications and measurements for your application.

<https://www.airfilter-crossreference.com/convert/DONALDSON/P537447>

2006 Monaco Camelot 42-DSQ

- | | |
|--|---|
| <ul style="list-style-type: none"> <input type="checkbox"/> WIX 46891 <input type="checkbox"/> Napa Gold NGF 6891 <input type="checkbox"/> BALDWIN PA2721 <input type="checkbox"/> CANADIAN-FILTER CFM4001 <input type="checkbox"/> CARQUEST 88891 <input type="checkbox"/> FARR 062891001 <input type="checkbox"/> FARR 62891001 <input type="checkbox"/> FARR 628911 <input type="checkbox"/> FARR C628911 <input type="checkbox"/> FLEETGUARD AH1104 <input type="checkbox"/> FLEETGUARD AH8501 <input type="checkbox"/> FLEETLIFE FA8911 | <ul style="list-style-type: none"> <input type="checkbox"/> Fram CA7229 <input type="checkbox"/> GENERAC P537447 <input type="checkbox"/> HASTINGS AF2267 <input type="checkbox"/> HIFI-FILTER SA16219 <input type="checkbox"/> KRALINATOR LA1478 <input type="checkbox"/> KRALINATOR LA14781 <input type="checkbox"/> LUBER-FINER LAF1828 <input type="checkbox"/> NAPA 6891 <input type="checkbox"/> NELSON 87252N <input type="checkbox"/> SCHUPP SL6277 <input type="checkbox"/> SPARTAN-MOTORS 420HH2 <input type="checkbox"/> WIX 46891 |
|--|---|

Possible Alternate Air Filter: Torque 062891-001: <https://www.amazon.com/dp/B09ZWYVRPJ?th=1>

Air Intake Heater

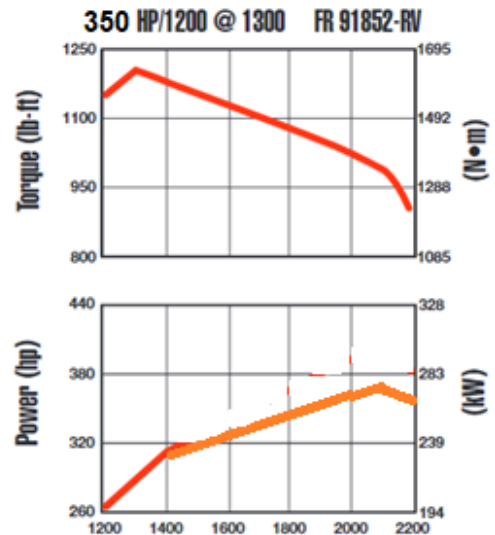
Cummins Part #: 3967274
 MR - AIR HEATER STARTER AID
 Engine Family: C & L Series
 Air Heater Type: Grid Heater
 Voltage: 12
 Amperage: 200
 Ground Type: Isolated
 Mounting Bolt Pattern: 4 x 9.5 mm Irregular
 Grid Heater Location: Air Intake Manifold

Fuel Filters

Primary: Fleetguard FS1003 (NAPA: Gold NGF 3604 @ C\$65.59)
 Secondary: Fleetguard FF5488

Engine: Cummins ISL 400 8.9 L

S/N: 46580780
 No DEF
 Horsepower: 350 @ 2100 RPM
Note: Cummins spec is 400
 Torque: 1200 ft-lbs @ 1400 RPM
 Governed Speed: 2200 RPM
 Wrist Pin Recall: [Click Here](#)



Specifications

ADVERTISED HORSEPOWER	350 HP	208 KW
PEAK TORQUE	1200 LB-FT	1627 N·M
GOVERNED SPEED	2200 RPM	
CLUTCH ENGAGEMENT TORQUE	550 LB-FT	746 N·M
NUMBER OF CYLINDERS	6	
OIL SYSTEM CAPACITY	7.3 U.S. GALLONS	27.6 LITERS
SYSTEM WEIGHT	1,685 LB	764 KG
ENGINE (DRY)	1,635 LB	742 KG

Engine Oil:

15W40 HD Conventional
 Volume: 22.7 Liters / 6 usgal / 24 qts
 Filter: Fleetguard LF9009 (NAPA: Gold NGF 1748XD @ C\$84.69)

Notes:

1. Hand tighten filter then tighten ¾ turn.
2. Fill filter 50% then add 420-445 stokes of oil using barrel pump.

Engine Cooling System:

Stock: Coolant Additive (SCA): Minimum = 1.2 Maximum = 3.0 units per gallon

Upgrade June 2018: Organic Acid Technology (ES Compleat™ OAT)

2006 Monaco Camelot 42-DSQ

Change Interval: 24 months or 60,000 miles
Capacity: 9.75 usgal (39 Qts) = 36.9078 Litres
Thermostat Part #: 5284903

Coolant Tank Replacement

[C-Low Fab and Performance LLC](#)

Angled Outlet

Installed: August 2022

Radiator Hose Replaced: Gates 24220 (1 1/4")

Radiator Cap: STANT 10228 (7 psi)

Coolant level Sensor: WVE 5S1465

Alt:

FORD CLS1026

FORD F700 1995-1997

FORD F800 1995-1999

XC4Z10D968AA, SU2385,

NTK EE0029

WVE 5S1465

STANDARD FLS164

AIRTEX / WELLS 5S1465



Boost Pressure (Normal as per Cummins)

Governed Speed (2200 rpm): 32 psi (65 inch-Hg)

Maximum HP (2100 rpm): 33 psi (68 inch-Hg)

Maximum Torque (1400 rpm): 31 psi (63 inch-Hg)

Engine Data Plate (as per Cummins QuickServe Data for S/N 46580780)

Engine Dataplate - (Original) VIN:		
Marketing Model Name	Service Model Name	EPA Model Name
ISL-400	ISL CM850	6CEXH0540LAJ
Shop Order	Build Plant	Build Date
S037921	CNS - CONSOLIDATED DIESEL CO.	10 Feb 2006
Warranty Start Date	ECM Code	Fuel Pump Part #
30 Mar 2007	Not Available	4921431
Fuel Pump Calibration	Marketing Engine Configuration #	Technical Engine Configuration #
NA94	D563003BV07	D563003BX03
CPL #	Customer Number	Customer Name
CPL1096	76229	Not Available

Wrist Pin Recall (as per Cummins QuickServe Data for S/N 46580780)

Warranty Campaigns		
This engine may be eligible for a field campaign or TRP. Please contact your authorized Cummins service location for details.		
Number	Description	Status
C0713	ISL CM850 WRIST PIN, RV CAMPAIGN	COMPLETED

2006 Monaco Camelot 42-DSQ

Upgrade May 2019: Source Engineering Wax Valve

Replaced unreliable electronic control module for managing side radiator hydraulic fan speed. The electronic control module is difficult to find, expensive and prone to failure and short service life. When it has failed, the radiator fan runs at maximum speed regardless of engine temperature.

Kit: <http://sourcerv.com/conversion>

- Wax valve Part #: 553/1/09857/210
- Hoses and connectors.
- 0.018 Orifice

Note: The orifice is required to maintain a minimum fan speed to prevent high A/C compressor discharge pressure if A/C is operating, but engine is consuming minimal cooling.

Replacement/spare Wax Valve available from:

<http://www.whitehouseproductsltd.com/product-details.aspx?pid=18059453&&pn=553%2f1&page=4>



Wax Valve Adjustment

<https://www.facebook.com/photo?fbid=26677176778615950&set=gm.26670520992616819&idorvanity=1377453912350209>

- There is a allen cap with an o ring. It comes off. (make sure the engine is off) and under it there is an allen that is the adjustment for the hydraulic bypass.
- Ccw will increase bypass and slow the fan. I adjusted mine with test drives and settled on about 1 1/4 turns ccw to increase bypass and calm down my fan. The adjustment will not affect the ability for the fan to go to full speed when needed.
- Before my adjustment the fan would be raging at temps as low as 175 degrees with the slightest rpm causing dust storms on dirt roads and It would never calm down without shutting the motor down and letting it cool completely.
- Now the fan is 90% quieter and coolant and tranny are perfectly fine. 178-187 and tranny 150-170 after 45 min of driving ,hill, stop and go and complete heat cycles. And no more raging fan on surface street driving and exhaust braking I can actually hear the engine and not jet engine on the side of my coach.
- This information is for mechanical wax valve systems only.
- Also if the wax valve is defective I don't think it will adjust well. Mine was working but it was way too much fan speed at temps under the thermostat 180 degrees cycle.
- If you do want to adjust yours remember to shut off engine before removing the cap and go in 1/4 turn increments. Also carry the allen wrench with you.

Exhaust System

May 8, 2023

Replaced Cracked Exhaust Manifold

Labor: 2 Hours


Manufacturer	Product #	Description
CUM	3967759	Manifold Exhaust (1 of 2 pcs)
CUM	3937478	Manifold Exhaust (2 of 2 pcs)
ABC	3944593	Flange Head Cap
ABC	3945252	Exhaust Spacer
ABC	5269779	Gaskets

(Alt: 3937479)

Turbocharger Stud Replacement - Engine: Cummins ISL 400 8.9 L S/N: 46580780


2006 Monaco Camelot 42-DSQ

Switch to 360° view




Part Number	3967759
Description	Exhaust Manifold
ReCon Equivalent	Not Available
Oversized Part Alternatives	Not Available

Studs – Unconfirmed: M10 x 1.5 x 18

6	 4920497	IMAGE NOT AVAILABLE	STUD, DOUBLE END PLAIN	2
---	---	---------------------	------------------------	---

Nuts – M10

 3818824		NUT, HEXAGON FLANGE	4	M10 X 1.50.
---	---	---------------------	---	-------------

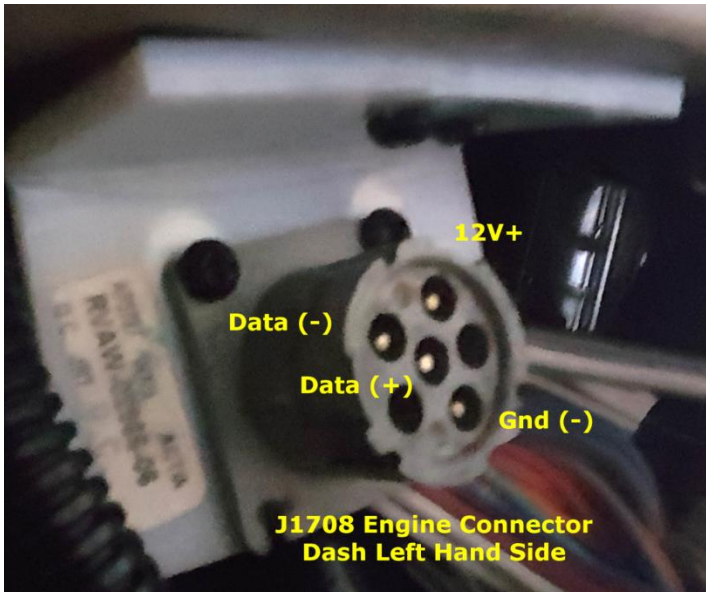
Engine Starter:

(Unconfirmed) Delco-Remy
39MT
8300013

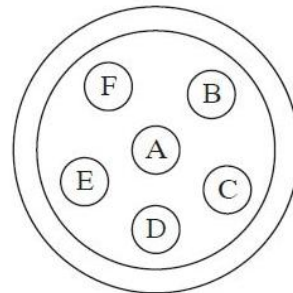


Engine Data

Link – J1708



J1708



Six-Pin Diagnostic

- A - Data Link +*
- B - Data Link -*
- C - Power*
- E - Ground*

2006 Monaco Camelot 42-DSQ

Engine & Transmission Monitoring (Real Time)

VMSpc by Silverleaf Electronics (<http://www.silverleafelectronics.com/node/6>)

Via: HP tablet

2006 Monaco Camelot 42-DSQ

Throttle Position Sensor

Type: Hall Effect Sensor

Part #: 050g-e4634

Note: No longer made.



Possible replacements

Part # ACDelco 15150990 GM

Fits: See Doorman 699-100 Fitment Chart



Dorman 699-100 Accelerator Pedal Assembly



Doorman 699-100 Fitment		
2008	Isuzu	Ascender
2007	Isuzu	Ascender
2003	Chevrolet	SSR
2003	Chevrolet	Trailblazer
2003	Chevrolet	Trailblazer EXT
2003	GMC	Envoy
2003	GMC	Envoy XL
2003	Isuzu	Ascender
2003	Oldsmobile	Bravada
2002	Chevrolet	Trailblazer
2002	Chevrolet	Trailblazer EXT
2002	GMC	Envoy
2002	GMC	Envoy XL
2002	Oldsmobile	Bravada

Hydraulic System (steering & cooling fan)

Hydraulic Oil Filters (3):

Specified: **Nelson: 84101B**

Alternates:

NAPA Industrial Hydraulics: W02AP536

WIX Industrial Hydraulics: W02AP536

Hydraulic Oil: Dexron III / Mercon. Alt: AW46 or 15W40 (Do not mix)

Note: Need approx.. 10 L - 12L to refill reservoir after drain down and filter replacement.

Air Dryer

Meritor Wabco System Saver 1200

Air Dryer Cartridge:

Meritor Wabco R950011

- Alliance Parts ABP/N10G-R950011
- NAPA: FLEX 950011G3
- BALDWIN: BA5374
- FLEETGUARD: AF27817


2006 Monaco Camelot 42-DSQ

Transmission: Allison 3000 MH 6 speed S/N: 6510625589

Filters(2): High Capacity Filter Kit **29558118** (plus 10 Quarts (9.5L) Transynd)
(as per Alison Service Tip #1099, Rev. T March, 2017)

Filter Change Interval: 75,000 miles (120,000 km) / 3000 hrs / 36 months

Fluid Change: 300,000 miles (480,000 km) / 6000 hrs / 48 months

Fluid Capacities (Approximate)*			
Transmissions Fluid Loss — Filter Change Only: Main Filter = 1.9 liters (2 quarts) Lube Filter = 7.6 liters (8 quarts)			
Model	Sump	Initial Fill**	Refill**
		Liters (Quarts)	Liters (Quarts)
 3000	4 inch	27 (29)	18 (19)
<small>* Fluid fill capacity is dependent on vehicle configuration. Final fluid capacity must be determined by dipstick level (see Mechanic's Tips MT3004EN Section 1 or your Operator's Manual under "Care and Maintenance". ** Approximate quantities, do not include external lines, cooler, and hose *** Add 2.8 Liters (3 Quarts) for Transmissions with PTO</small>			

Approved Fluids – TES 295

Castrol Transynd, App Num: AN-011001 (1 Gal Jug Part #: 27101-CTCS)

BP Autran Syn 295™, App Num: AN-031002

BASF Emgard 2805™, App Num: AN-031003

International Fleetrite Synthetic ATF™, App Num: AN-031004

Mobil Delvac Synthetic ATF™ / Mobil Delvac 1 ATF™, App Num: AN-051005

John Deere HD SynTran™, App Num: AN-071006

Mack Synthetic ATF™, App Num: AN-1010007

Shell Spirax S6 ATF A295™, App Num: AN-121008

CNH HD Synthetic ATF™, App Num: AN-121009

Transmission Configuration as Installed

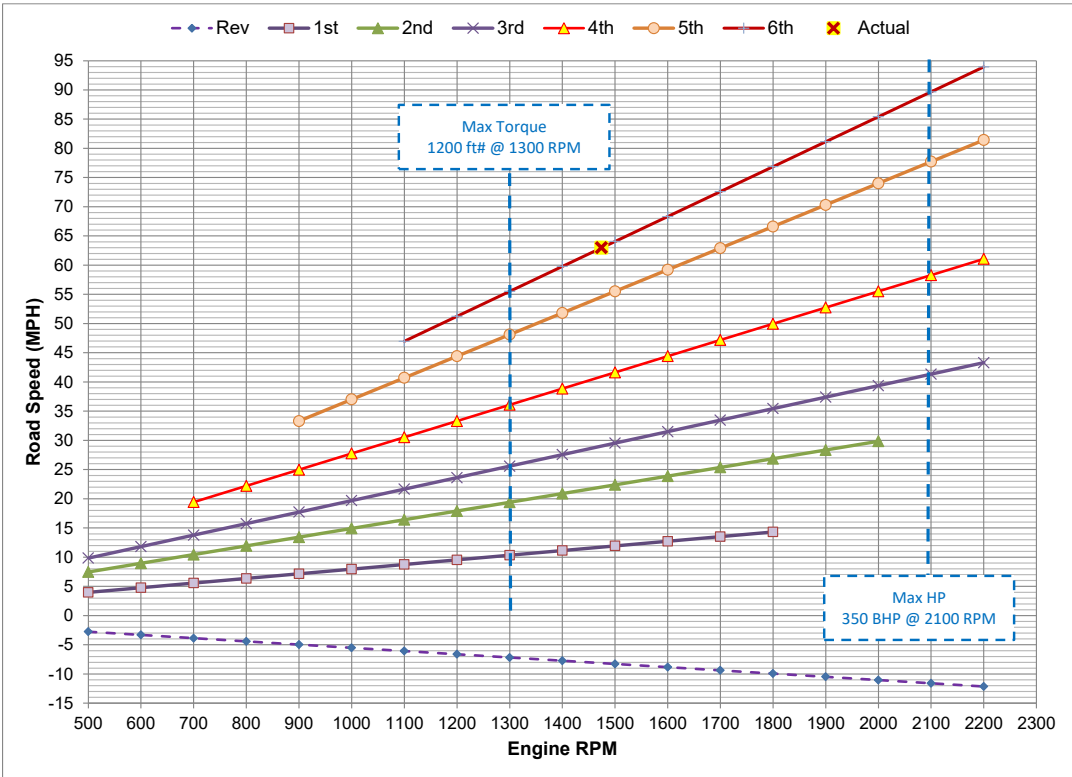
#	Description
FTL	LEFT FILL TUBE OR PLUG
RSN	NO REAR SUPPORT BRKT.
01-835	MAIN HSG. MD - GEN 4
02-636	W/O FILL TUBE & DIPSTICK
05-598	MAIN SHAFT MODULE (CR)
08-813	MD1610 FULL ROUND YOKE W/SHIELD
10-603	OIL PUMP STD W/O PLATE
14-1003	P1 PLANETARY MOD (CR&WR)
15-509	P2 PLANETARY MODULE (CR)
16-1826	CNTRL VALVE MD,4" SUMP , OLS, PLUS 4
20-509	REAR REMOTE PROVISION
21-936	TC421 CONVERTER MODULE MD**
24-771	TRNS SE CUM"C",6 BOLT
25-542	ROTATING CL 3066/B4 STD
34-542	CONVERTER HOUSING STD
39-884	MD,REAR COVER, CR,NO TACHO, 1BOLT,N/O,S/

Stall Torque Ratio: 1.77 (TC-421 Converter Module**)

2006 Monaco Camelot 42-DSQ

Mechanical Ratios (do not include torque converter multiplication)

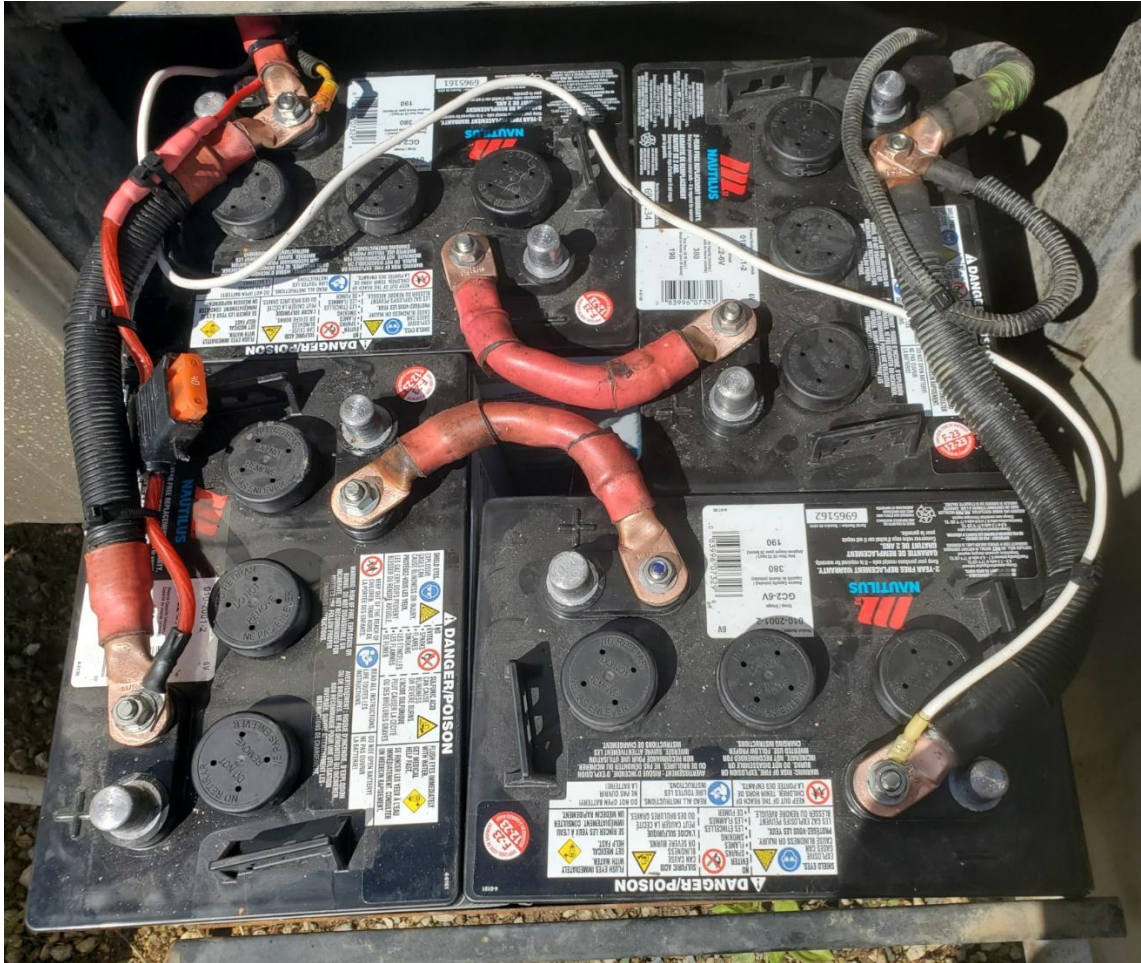
Rev	1st	2nd	3rd	4th	5th	6th
-5.03:1	3.49:1	1.86:1	1.41:1	1.0:1	0.75:1	0.65:1



2006 Monaco Camelot 42-DSQ

Batteries

House: 4 x 6 Volt AGM in Series (12V) Parallel Configuration.



Part #: 010-2001-2 Motomaster Canadian Tire

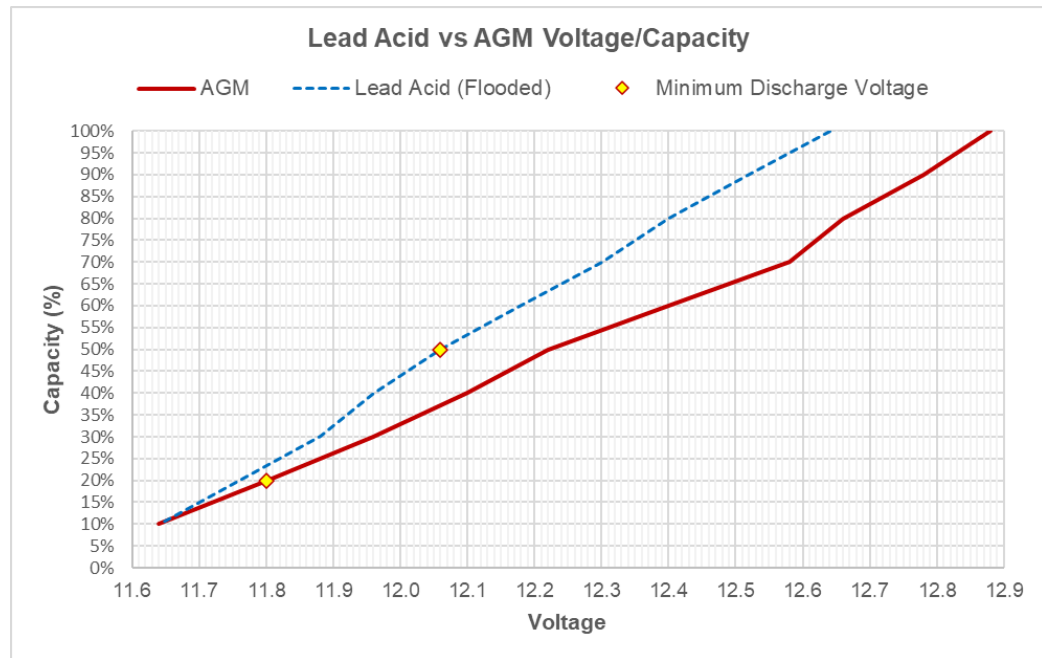
Size: GC2-6V

Ship Date: May 2023 (Ship Code: F-23), Installed July 2023

190 Amp-Hour (@20 Hours)

Depth of Discharge: Min 20% (11.8V)

2006 Monaco Camelot 42-DSQ



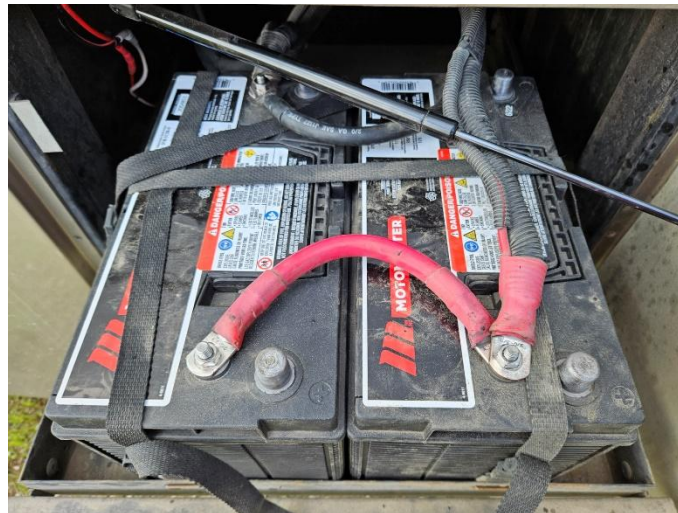
Reserve Capacity 380 Minutes

Float Standby: 13.4V – 13.6V

Charge/Absorption/Equalization: 13.8V to 14.6V

Tray: 19 7/8" (W) X 17 3/8" (Deep)

Chassis:



MOTOMASTER Group 31 12-Volt Commercial Battery (Heavy Duty)

Stock #: 010-3139-0 (Canadian Tire)

CA: 1170

CCA @ 0F: 950

Reserve Capacity: 175 minutes

Dimensions: 13" L x 6 3/4" W x 9 1/2" H (330 x 170 x 240 mm)

Installed: July 27, 2023

2006 Monaco Camelot 42-DSQ

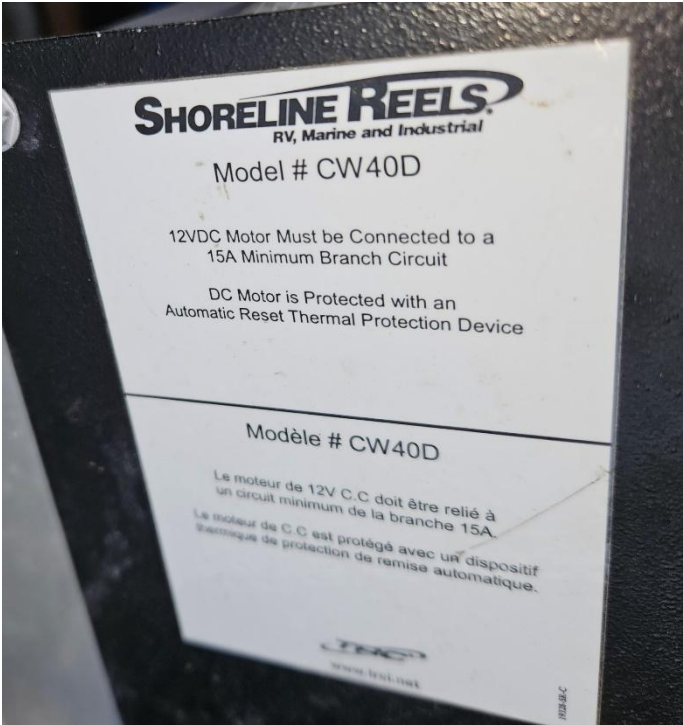
Transfer Switch:

IOTA ITS-50R
Inspected & Checked Terminal Torque: Sep 9, 2022
No sign of overheating or Contact Damage



Spare Transfer Switch carried onboard: WFCO T57 50 Amp – Purchased Aug 23, 2022

Hose Reel (Water System)



2006 Monaco Camelot 42-DSQ

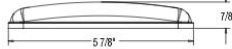
Marker/Clearance Lights

Front: Kaper II L14-0026A – Replaced May 2019

Rear: Kaper II L14-0026R

LED MARKER LAMP 12 DIODE

FMVSS: P2 P3



L14-0026R



L14-0026A



FEATURES:

- 5 7/8" x 2"
- 2 bare wire

MATERIAL:

- Polycarbonate lens
- ABS housing

LIGHT SOURCE:

L14-0026R

- 12 light emitting diodes
- Tested at 12.8V

L14-0026A

- 12 light emitting diodes
- Tested at 12.8V

Paint Colors

Touch-up Paint: R-M Diamont (A brand of BASF)

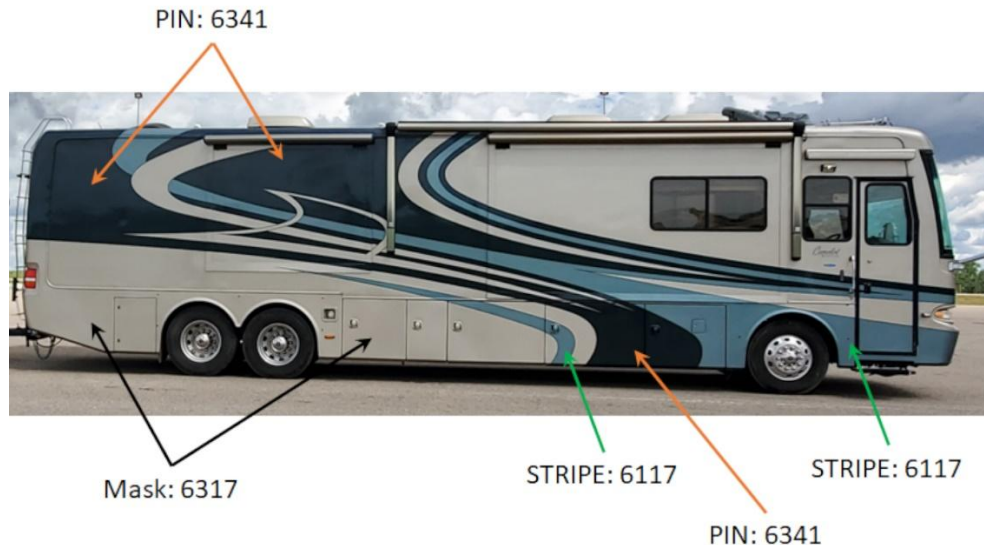
<https://refinish.basf.us/where-to-buy/>

Website: <https://refinish.basf.us/brands/r-m/>

Technical Manual:

https://www.coatingsmall.com/cap_data_docs/documentum/RM/Technical_Manuals/English/AD2526%20R-M%20English%20US%20Manual.pdf

For spraying, dilute with Lacquer Thinner (Automotive Grade)



Color Scheme: Ultramarine

Dark Green (PIN 6341) – Diamont R-M: Thistle Green Metallic

Mid Green (STRIPE 6117) – Diamont R-M: Bermuda Teal Metallic

Gold (MASK 6317) – Diamont R-M: Ivorywood Metallic

Industrial Finishes - <https://industrialfinishes.com/distribution-centers/>

Only Branch with mixing Formula.

1400 Leininger Ave

Elkhart, Indiana

574.293.9920

2006 Monaco Camelot 42-DSQ

2006 Monaco Signature Series Model Lineup

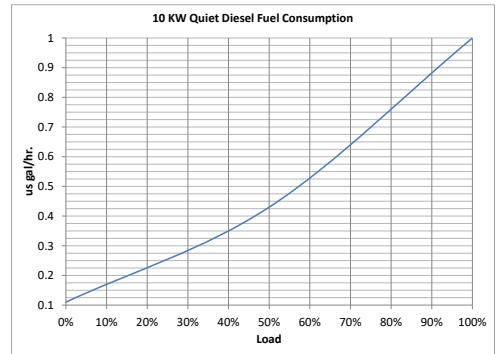
1. Executive
2. Dynasty
3. Windsor
4. **Camelot**
5. Diplomat
6. Knight
7. Cayman
8. LaPalma
9. Monarch SE
10. Esquire

2006 Monaco Camelot 42-DSQ

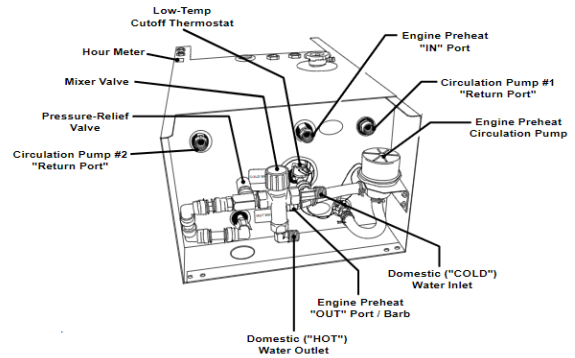
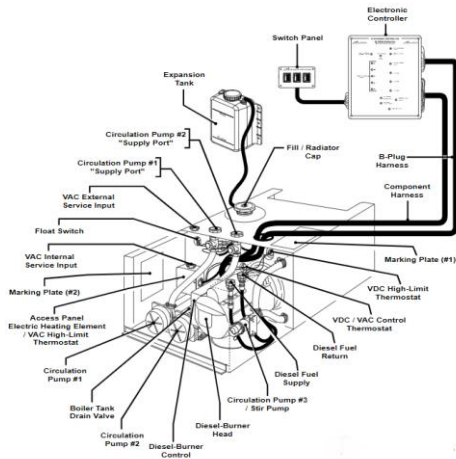
Generator

Onan Quiet Diesel 10000
 Model #: 10HDKCA11506B Spec: B
 S/N: B060885264
 Amps: 41.7
 Options: B273-2, R10A-2, A223-1, F166-1, L045-1, P090-1, Spec-B, 10HDKCA
 Starter Current Draw: 197 Amps @ 15 °C (60 °F) [Initial Peak 207 Amps]
 Air Cleaner: 140-3071 (Donaldson P822686)
 Fuel Filter: 149-2513
 Oil Filter: 122-0893 (Kubota HH164-32430, Fleetguard LF3706)
 Oil Capacity = 5.68 Liters (6.0 quarts) w/oil filter
 5F to 120F – 15W40 (-13 F to 88 F – 10W30 / -40 F to 88 F – 5W30)
 Glow Plug: 185-5990
 Fuel Consumption:

0 Load: 0.11 usgph
 ½ Load: 0.43 usgph
 Full Load: 1.0 usgph



HydroHot Heater



Model: HHE-200-09E
 Serial #: HE06-0512
 Manufacture Date: 03-06
 Diesel-Burner Serial #: 07231
 Diesel-Burner, Heat Input (Firing Rate): 50,000 BTU (14.65 KW)
 Diesel-Burner, Fuel Consumption (Continuous Operation): 0.40 gal/hr
 Heater, Voltage/Maximum Power Consumption: 12 Vdc /60 watts
 Electric Heating Element: 120 Vac /1650 watts
 Zone Heat Circulation Pump: 2 @ 12 Vdc/21 watts
 Number of Heating Zones: 2 - plus Engine Preheat
 Domestic Water Heating Capacity: continuous/on-demand GRAS
 Antifreeze Type: (Generally Recognized as Safe) Propylene Glycol (Red)
 Antifreeze Concentration: 50/50
 Freeze Point: -28 °F (-33 °C)
 Boiling Point: 222 °F (105.6 °C)
 Dimensions: 12"H x 18.5"W x 30"L
 Dry Weight: ~ 127 lbs.
 Wet Weight: ~ 184 lbs.

2006 Monaco Camelot 42-DSQ

Garber R Fuel Filter

- FLE-120-100

Fuel Filter: *Alternates:*

- *Luber Finer LFF5*
- *Napa 3109*
- *WIX 33109*

Yearly maintenance

- Clean combustion chamber.
- Clean heat exchanger.
- Clean fire eye.
- Adjust ignitors.
- Replace nozzle.

Hydro-Hot Service – June 25, 2020
@ 1821.4 hours

Replaced bearings.

Replaced wave washer.

Set Fan clearance.

Greased fuel pump gears.

Replaced Fuel Solenoid.

Replaced Blower Casing – Small stress cracks
on top connection (over torque??)

Replacement Pumps (Alternative to expensive AquaHot replacements):

Tesco MAR 809 BR (12 VDC) - <https://www.tescopumps.com/mar-809-br-12vdc>

Tesco MAR 809 BR-C (12 VDC) - <https://www.tescopumps.com/mar-809-br-c-12vdc>

Possible replacement Boiler Fluid - [Link - Home Depot](#)



Aquamatic Smart Controller Upgrade installed July 28, 2025:

Model AM1

<https://aquamaticsc.com/store#!/Model-AM1-for-Aqua-Hot-System/p/716005031>



2006 Monaco Camelot 42-DSQ

Wet Bay Heater

Model 3000RV

Snap Disc: 36TX21 21190 L55-15F A0525

Air Conditioners

Make: Dometic

MFG #: 651515.301K0

Prod #: 991762342

SKU: 9108561078

S/N (rear Unit): 00896620

13500 BTU

10.5 Amp Heater

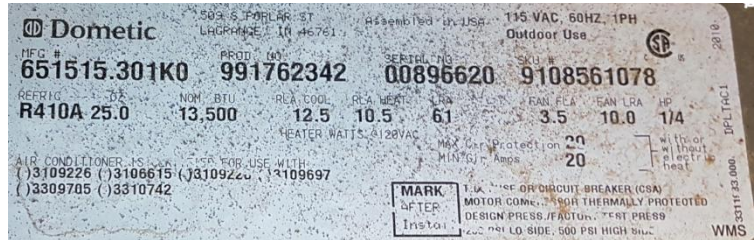
Heat Pump: Lift 38°C

Min o/s Temp -1 °C (30 °C)

20 Amp max draw (with or without heater)

Refrigerant: 410A / 25.0 oz.

July 30, 2020: Replaced all 3 A/C shrouds with shrouds from: <https://www.icondirect.ca/penguin-dometic-duo-therm-air-conditioner-shroud-pw/>



Headlights

Curb Side / Passenger Side SAE HR 96 DOT (R) TYC 20-5197-90

Same unit at 97-05 Buick Century and 97-04 Buick Regal



Road Side / Drivers Side SAE HR 96 DOT (L) TYC 20-5198-90

Same unit at 97-05 Buick Century and 97-04 Buick Regal



Windshield Wipers

Blades

Recommended Wiper for 2006 Monaco Camelot

TRICO RV »

32" Blade - Driver & Passenger Side Part # 67-321



Where to Buy »

Replaced with Reflex Ice Defense 28" 021-2111-4 (Sep 2022)

Windshield Wiper Motor

Wexco G138 (400.01000.5512) 05304

55 nm.

Alt: 17299 KOR 1M26372917J26A74A (Not Confirmed)

2006 Monaco Camelot 42-DSQ

Air Bags (10 Required)

Monaco #: 0180-4591

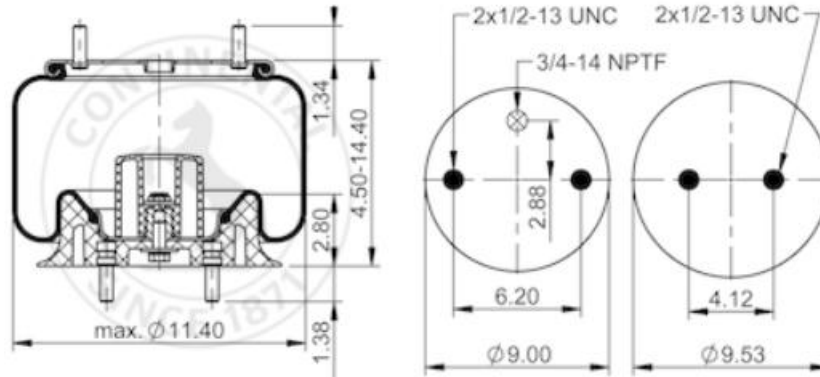
Contitech #: 9 9-12 P 730, (Order No. 64664)

April 24, 2023

Replaced 10 Air bags (Alberta Coach & Chassis)

Total Labor: 10.5 hours

https://www.truckandtrailer.parts/ContiTech-AS8897-Air-Spring-Monaco-001804591_p_1509.html



Torque:

3/4 -14 NPTF – Max 22 ft lb

1/2-13 UNC – Max 35 ft lb

2006 Monaco Camelot 42-DSQ

Alternates: [Link](#)

Automann PN: AB 1DK20D-8897

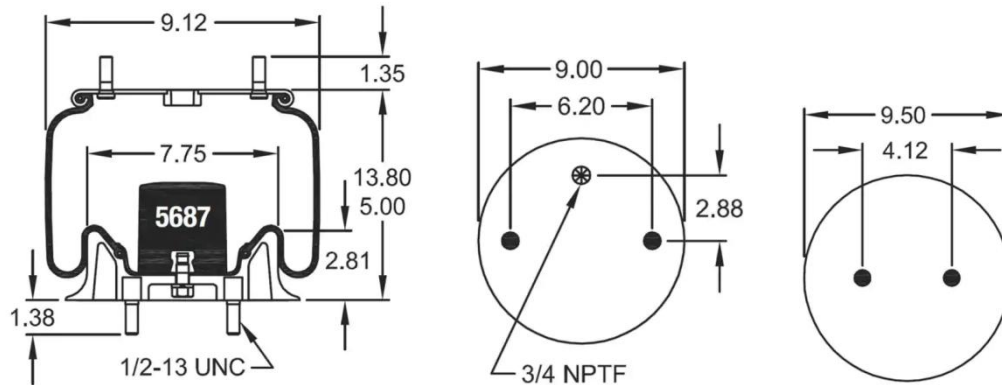
Firestone W01-358-8897 (replaced by W01-358-9376)

Firestone Style: 1T15L-2

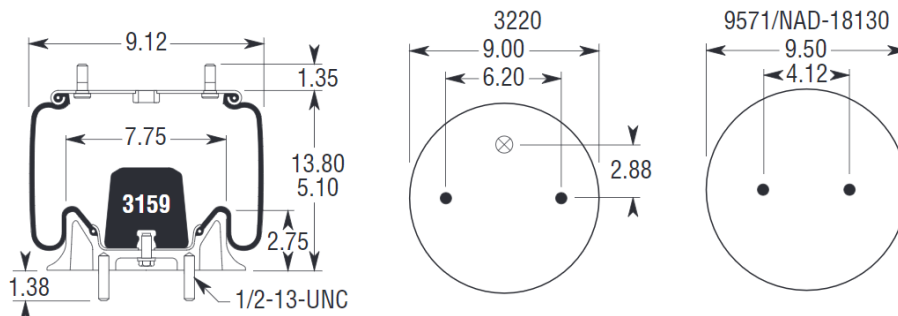
Triangle AS-8730

TRP AS88970

Firestone W01-358-8897



Firestone W01-358-9376



Hardware Key

● Bolt or Stud 1/2-13 ⊕ Threaded Hole 3/8-16 Blind Nut on Bead Plates 1/2-13 in Pistons ⊗ Air Inlet 1/4 N.P.T. ★ See Piston Index ▲ No alignment specified-center stud mounting is standard
⊗ Combination Stud/Air Inlet Stud Outside Thread is 3/4-16 ⊗ Stud Inside Thread (Air Inlet) is 1/4 N.P.T. Exceptions will be noted on Part View as ⊗

Suspension Parts (Possible Alternates: from 2006 Executive RR10S chassis)

Shocks: Bilstein 24-187312

Front Axle: Spicer E1462W (**Run Sheet: Dana E1462W 1462 BN 202-1**)

Front Rotors: Centric 120.86007

Front Pads: Centric 306.14410

Drive Axle: Dana (430 Ratio) (**Run sheet: Dana 21060S Spec#0599911**)

Rear Drive Shoes: Armada BK4709ES2AR2

Rear Drive Drum: Armada DU60793

Tag Axle: Dana D22AU601A134 (**Run Sheet: D22AU601A133-001**)

Rear Tax Shoes: Meritor 4515qar2

Rear Tag Drum: Armada 60793D

Front Drag Link: 64" adjustable (SS69240)

2006 Monaco Camelot 42-DSQ

Slide Motor

Original: Klauber KD01285D300 – 1/10 HP @ 9 Amps (Lippert 138449)
Recommended Upgrade: Klauber KD01285F350 – 1/5 HP @ 18 Amps (Lippert 143701)
(Monaco states existing wiring OK).

<https://www.lippert.com/klauber-f-350-motor-143701>

<https://www.etrailer.com/RV-Slide-Out-Parts/Lippert/LC52UD.html>

Upholstery

Loveseat/Bed & Captains Chairs reupholstered May 2020: Ultraleather - Buff #104251.
Kitchen Chairs reupholstered April 2020: Ultraleather - Cashmere #103848.

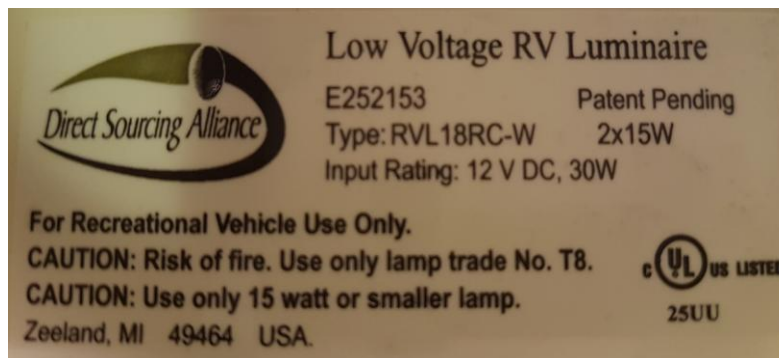
Steps – Front Door

Manufacturer: CoachStep by Lippert
Model: 3691461
Control Module: [301702](#) (Replaced Sep 2020)
Motor: [301695](#)

Over the Door Awning

Manufacturer: Carefree of Colorado
Model: Marquee
Size: 50" (Actual 51 ½")
Fabric Width: 46 ½"
Documentation: <https://www.carefreeofcolorado.com/products/marquee-otd.html>

Florescent Fixtures



Outside: 6 ¼" (W) x 22 7/16" (Len)

Cut-out: 4 ¾" (W) x 18 3/8" (Len)

2006 Monaco Camelot 42-DSQ

LED strip conversion:



2 or 4 18" 60/m LED strips (4 shown)

Florescent bulbs and fittings (incl. ballast) removed.

¼" 3m moulding tape used to attach LED Strips

Power Consumption:

2 Strip - 0.8 Amps (9.6 Watts)

4 Strip – 1.6 Amps (19.2 Watts)

Microwave Oven

Sharp Model R-1874F

Over the Range Convection Oven

AC Power: 1600 Watts / 13.2 Amps

Microwave: 850 Watts

Convection: 1400 Watts

O/S Dim: 29 15/16" (W) x 16 11/32" (H) x 15 9/32" (D)

Turntable: 13"

I/S Dim: 17 1/8" (W) x 8 1/16" (H) x 13 13/16" (D)

Replacement: Sharp T1874R



Refrigerator

Dometic Auto Defrost

Model: NDA-1402

S/N: 52300011

Washer/Dryer

Make: Splendide

Model: WC 2100XC (NA)

S/N: 404236048 ' 80866760000

UL Listed 37H1 E77149

Mar 2018: Error Code F13 - Drying NTC sensor (Thermistor ntc part # C0083915) open / short circuited. Fan motor (Part #: C00110434) blocked

Solution: http://www.visualsc.com/Splendide_F13_Error_Solution.pdf

2006 Monaco Camelot 42-DSQ

Built-in Vacuum

Dirt Devil Model CV1500
Bags Part #:9597

Toilet (1/2 Bath)

Thetford Aqua Magic V (Tall model in Bone) – *Replaced Jan 2019*

Water Filter

Uses 2 - 2.5" x 10" filters
1st Filter – 5 Micron Sediment
2nd Filter – Charcoal

Planned Work / Potential Parts Sources

Fuel Level Upgrade

Holley Universal Easy Level Floatless Laser Fuel Level Sender w/LiDAR Technology

<https://www.jegs.com/i/Holley/510/19-250/10002/-1? br psugg q=holley+fuel+level+sender>



FASS Fuel Pump Installation: FASS Titanium TS-D08-165G

https://www.irv2.com/forums/f123/fass-installation-on-cummins-isl-in-monaco-dynasty-529299.html?utm_source=newsletter&utm_medium=email

<https://www.dirtydieselcustom.ca/products/1998-2004-cummins-165gph-signature-series-titanium-lift-pump-tds08165g>

<https://www.dirtydieselcustom.ca/products/1998-5-2004-cummins-250gph-signature-series-titanium-lift-pump-tds08250g>

2006 Monaco Camelot 42-DSQ

Micro-Air EasyTouch RV Thermostat



Model RV357 to replace 5 button

<https://www.microair.net/products/easytouch-rv-thermostat?variant=37538126627005>

Smart Wheel Controller



<https://www.imminet.com/products/steering-wheels/v4-smartwheel-series/>

2006 Monaco Camelot 42-DSQ

Build Sheet – From Monaco

Recreational Vehicle Data Card

Unit Serial Number: 060119184223400166696
 Federal ID Number: 1RF43561162040521

Monaco Coach
 Mpv / Mha (Mh / Ac)
 Camelot

Order #
 130639

ITEM	MANUFACTURER	MODEL #	SERIAL #
LP TANK	MANCHESTER	68140	65565
GENERATOR	ONAN	10HDKA11506C	B060885264
INVERTER	MAGNUM	ME2012B20	B1-11177
WATER PUMP	AQUA-JET	5503-4V15-B636	1995563
TOILET	THETFORD	34425	060309-34425-7316
TOILET	THETFORD	28970	060224-28970-9809
CABLE BOX	WINEGARD	VS0604/6412	000189
MICROWAVE	SHARP	R-1874-F	412034
ROOF AIR-CONDITIONER	DUO-THERM	630035.331	611 34434
REFRIGERATOR	NORCOLD	NDA1402	60700005
RANGE/COOKTOP	AMANA	ALZ8590ADB	11047970JA
AQUA HOT/HYDRO HOT	HYDRO-HOT	HHE-200	HE06-0512
DASH RADIO	MAGNADYNE	M9900CDS	051002264
REAR VIEW MONITOR	WELDEX	WDRV-6800M	WDFB2500002
ROOF AIR CONDITIONER	DUO-THERM	630035.321	610 34700
ROOF AIR-CONDITIONER	DUO-THERM	630035.321	610 34699
ENTRANCE DOOR			223
ENTRANCE DOOR KEY	TRIMARK		1050
DEADBOLT KEY			13346
BAGGAGE DOOR KEY		1050	751
IGNITION KEY		GM	10C4
ALLADIN SYSTEM		431-06L;	2282
PAINT CODE	PIN 6341	MASK 6317	STRIPE 6117
TRIMARK	19906-01	REV-4040	121905-0040
OTHER	RIVER PARK	6CHXOV-01	053411610
HOME THEATRE SYSTEMW/DVD	RCA	RTD-300	NA055E395NA05F
TELEVISION-FRONT	SHARP	LC-32GA5U	A502823771
TELEVISION-REAR	RCA 20"	20V412T	F494EC258
AWNING-ENTRANCE	CAREFREE		2082618910
AWNING-WINDOW	CAREFREE		2082725681
AWNING-WINDOW	CAREFREE		2082759300
AWNING-S/O	CAREFREE		2082759270
AWNING-S/O	CAREFREE		2082825991
AWNING-S/O	CAREFREE		2082759250
AWNING-S/O	CAREFREE		2082759280
FRONT AXLE	DANA	E1462W 1462 BN 202-1	HU00691468
REAR AXLE	DANA	21060S SPEC#0599911	HN02197902
TAG AXLE		D22AU601A133-001	LV00071931
STEERING GEAR BOX	TRW	TAS65187-A	
JACK PUMP	POWER GEAR	501196	0000901
ENGINE	CUMMINS	ISL 400HP	46580780
TCM BOX		ISL400T	BK4773N1529353PG
CAL#		A41001M9	
TRANSMISSION	ALLISON	E012544	6510625589
EXHAUST BRAKE		C26085	008769
RADIATOR	MODINE	X-6925-51	039T2692551
A/C COMP	SCS FRIGETTE	094-00018	0581505580
A/C EVAP	SCS FRIGETTE	08600347	1787579
A/C BLOWER	SCS FRIGETTE	08700251	1872718
TIRE RF: DOT# DANV2CAW	GOODYEAR	G670 295/80R22.5H	5205
TIRE LF: DOT# DANV2CAW	GOODYEAR	G670 295/80R22.5H	5205
TIRE RRI: DOT# DANV2CAW	GOODYEAR	G670 295/80R22.5H	4705
TIRE RRO: DOT# DANV2CAW	GOODYEAR	G670 295/80R22.5H	5005
TIRE LRI: DOT# DANV2CAW	GOODYEAR	G670 295/80R22.5H	5205
TIRE LRO: DOT# DANV2CAW	GOODYEAR	G670 295/80R22.5H	5205
TIRE RTAG: DOT# DANV2CAW	GOODYEAR	G670 295/80R22.5H	5205
TIRE LTAG: DOT# DANV2CAW	GOODYEAR	G670 295/80R22.5H	0106
VIN			1RF43561162040521